



DUXXBK WATER SHEDDING DECK SYSTEM INSTALLATION INSTRUCTIONS

DuxxBak Water Shedding Deck System

3-31-15 Version 13.4

- The DuxxBak Water Shedding Deck System is designed to shed water and will provide an under deck area dry space when properly installed and maintained. Proper installation and maintenance of seals and flashing are required to assure an effective system.



TABLE OF CONTENTS

Important Installation Tips	3
General Information	4
Building Codes and Construction Practices.....	4
Substructure Construction.....	4
DuxxBak Product Profiles.....	4
Sufficient Pitch.....	4
Proper Caulk and Flashing System.....	5
Fasteners.....	5
Gutter Installation.....	6
Special Design Concepts.....	6
Substructure Framing.....	6
Scheduling Your Deck Project.....	7
Installation Hints.....	7
The Installation of Your Deck.....	7
Installation Method Descriptions	9
Guide A.....	10
Guide B.....	15
Guide C.....	21
Stair Installation	29
Care and Maintenance	29
Warranty	29
Warranty Form	30



DUXXBK WATER SHEDDING DECK SYSTEM IMPORTANT INSTALLATION TIPS

- Carefully read and use the installation instructions that are provided here.
- Hybrid engineered composite decking will expand and contract as temperatures change. To minimize these effects, attempt to install deck boards when temperatures are as close to 60 degrees as possible. For the most uniform results on hot days, lay the boards out in the shade before installation to minimize the effects of temperature extremes. Also avoid extreme cold temperature installation.
- An unrestricted minimum pitch of 1/8" per foot in the direction of intended water flow is required. A pitch of 1/4" per foot will provide better water shedding assurance.
- A gap of at least 1/8" must be provided where the deck meets the house or other structure. A minimum gap of 3/16" must be provided at each side of posts or other obstructions.
- See the "DuxxBak Water Shedding Deck System Installation Instructions" for fastener selection recommendations to assure a secure installation. Fastener selection does make a difference.
- All fasteners must be located a minimum of 3/4" from the ends of the deck boards to avoid damage. Additionally, any necessary face fasteners should be placed near the deck board structural septum. Avoid over penetration of the fastener heads to assure that the fasteners will not pull through.
- Adequate under deck air circulation is required. In general practice at least 24" of open space is required.
- The installation of a ceiling under your deck is not recommended. If a ceiling is installed it should be constructed using water resistant materials and must be vented to provide adequate airflow to the substructure.
- Adequate drainage and/or ground run off capacity should be provided to assure that continuing wet conditions are not present in the soil under the deck.
- Avoid conditions where reflective heat buildup from "Low-E" glass may cause damage to your deck.
- Installation and care instructions can also be found on our website at www.GreenBayDecking.com.
- The "QR" code show on this page will direct you to the Green Bay Decking website and complete installation instructions via your cellular telephone. An "app" is required.

Thank you for choosing the DuxxBak Water Shedding Deck System.



GENERAL INFORMATION

GENERAL INFORMATION

All DuxxBak deck boards manufactured by Green Bay Decking have laser engraved identification information on the board edges. The information is repeated every 4 feet. This information includes the manufacturer's name, the product identification, the date and time of production, the production line identification, and the ICC Report Number – ESR 1369.

DuxxBak deck boards are made from a formulation of (reclaimed) paper by-product, rice hulls (a rapidly renewable resource), HDPE, and other high-quality materials. Its properties differ from those of wood products. Therefore, DuxxBak decking has different handling and installation requirements which must be considered during planning and installation of your deck. Following the tips and instructions provided here will help deliver a quality installation and assure many years of enjoyment.

Typical woodworking tools are required. No special tools are required.

BUILDING CODES AND CONSTRUCTION PRACTICES

Follow all local building codes and use sound construction practices to help assure that your deck will provide many years of enjoyment.

The installation instructions that follow have been prepared to guide your deck to completion. Following the necessary steps will help avoid later concerns.

Excellent deck construction books are available at your building materials supplier or local book store.

SUBSTRUCTURE CONSTRUCTION

Verify that the selected substructure lumber is sized correctly to provide a safe and compliant finished deck.

Quality building materials should be selected to assure a long lasting deck structure. It is recommended that the moisture content of the substructure lumber be 19% or less.

Assure that the joist system is properly squared and secured with center blocking and cross bracing.

DUXXBK PRODUCT PROFILES

DuxxBak Product Profiles

- DuxxBak Decking
 - Description: 5/4" x 7-1/4"
 - Height: 1-1/4"
 - Width: **5-3/4" Coverage**
 - Lengths: 12', 16', and 20'
 - Weight: Approx. 2.1 lbs./ft.



- DuxxBak Decking End Cap (Right & Left)
 - Height: 1-1/4"
 - Width: 5-3/4"
 - Weight: Approx. 0.06 lbs.



SUFFICIENT PITCH

Assure that your deck has an **unrestricted** minimum pitch of 1/8" or more per foot to help divert water from the deck surface and to better assure that water will not flow in the reverse direction. For greater assurance a pitch of 1/4" per foot is recommended. Assure that an unwanted high point that might keep water from flowing in the proper direction is not present in the structure. Pitch must be parallel to the lengthwise direction of the deck boards.

PROPER CAULK AND FLASHING SYSTEM

Successful installation of your deck is dependent on proper sealing and flashing at the surfaces where the deck meets your home or other structure. Water must be properly diverted to avoid leakage. Use the written and illustrated instructions that follow and adhere to the requirements of your local building code. The following material suggestions may be beneficial.

- **Sealants:** Use the best performing sealants available from your supplier to form water barriers at joints. DuPont Residential Sealant or a 100% silicone caulk can be used.
- **Sealing Tape:** Use the best sealing tape available from your supplier to form a waterproofing barrier at the point where the flashing and house wrap are joined. DuPont Tyvek Tape can be used.
- **Butyl Tape:** Use the best butyl tape available from your supplier to form a waterproofing barrier at those points where structural objects penetrate the deck to form a waterproofing seal. A flexible wrap such as DuPont Flex Wrap NF can be used.

FASTENERS

General Notes

- Avoid the use of “composite screws” and other screws with “reverse threads” near the top end of the screw to avoid the possibility of tearing the deck material.
- Assure that the fastener coating is conducive (ACQ approved) to the substructure lumber if coated fasteners are used.

DuxxBak Decking

- Use #7, #8, or #9 stainless steel or coated “trim head” screws 1-1/4” (or longer) to attach the decking at the fastening wing. **Insert fasteners at an angle of 55-60 degrees.** (Please see illustration)
- Use #7, #8, or #9 stainless steel or coated “trim head” screws 2-1/4” (or longer) to attach decking at the wall when it is necessary to insert a fastener through the face of the deck board. It is best to avoid this type of attachment whenever possible as it can become a point where water can eventually enter and find its way to the area below.



- Type 316 stainless steel screws are recommended for use near salt water.
- Avoid the use of composite deck screws.

GeoDeck or TerrainDeck Perimeter Strip

- Use #7, #8, or #9 stainless steel or coated “trim head” screws 3” (or longer) to attach the perimeter board.
- Type 316 stainless steel screws are recommended for use near salt water.
- Avoid the use of composite deck screws.

GeoDeck or TerrainDeck Fascia

- Use #7, #8, or #9 stainless steel or coated “trim head” screws 1-1/2” (or longer) to attach fascia.
- Type 316 stainless steel screws are recommended for use near salt water.
- Fasten according to the instructions provided with three fasteners every 12” to assure proper installation.

DuxxBak Decking End Cap

- Use two stainless steel brad nails (5/8”, 3/4”, or 1”) to secure the end cap to the end of the deck board. Alternatively, small holes can be drilled and stainless steel screws inserted.
- Install the brad nails through the bottom of the deck board and into the tabs of the end cap. A brad nail gun will allow for an easy installation. Assure that the end caps are properly installed with the drain slots down to allow for effective drainage.
- Type 316 stainless steel brad nails are recommended for use near salt water.

GUTTER INSTALLATION

As water sheds from the edge of your deck it may be advantageous to capture and divert the water away from the deck with a gutter system.

A seamless gutter system that is designed, fabricated, and installed on site may provide the best solution for proper water collection and diversion.

One of the colored gutter systems that are available at building supply centers may coordinate well with your home and deck.

SPECIAL DESIGN CONCEPTS

Special design concepts may require that you and your designer or builder consider how to best implement those concepts prior to construction to avoid installation and use concerns.

- DuxxBak decking is available in 12', 16', and 20' lengths. Design concepts must be considered if conditions require longer spans to assure that water can properly shed from the deck. **Deck boards should not be butted end to end.**
- *"Through the deck support posts".*
- Multi-level or multi-directional decking requirements.
- Transition from DuxxBak decking to GeoDeck or TerrainDeck decking.
- Hidden system to collect and divert water as it sheds from the deck edge.
- Hand rail system installation.

SUBSTRUCTURE FRAMING

Plan your deck substructure to use current framing techniques as outlined in the International Residential Code (IRC) and your local building codes.

Build deck slope into the substructure as previously discussed in the section titled "Sufficient Pitch." Remember that the deck pitch must be unrestricted. Therefore, a highpoint at a mid-deck point could cause water to flow in the reverse direction with the potential to cause water damage.

The ledger board should be properly attached to the house if the deck is to be an attached deck. The ledger board must also be properly flashed as required by local code.

DuxxBak decking is designed for installation on joists that are spaced at 24" on center.

GeoDeck or TerrainDeck S4S deck boards installed on the stairway to your deck will complement your deck. Stringer spacing for the stairs should be no more than 12" on center.

Structural blocking as described below is important to a safe deck and is generally required by local building codes.

- Required blocking to maintain a stable substructure.
 - Center blocking ties the joists together to complete the framing. It will keep joists from twisting and bowing and assist in keeping the deck square. Blocking should be installed every 6' along the joists, or if less than 12' at the mid-span.
 - Provide **additional cross bracing** as necessary to assure that the substructure will provide a **strong and stable platform** for your deck.

A 1-1/2" wide strip of waterproofing butyl sealing tape should be applied to the bottom of the deck board where fasteners will enter after penetrating the top of a deck board.

SCHEDULING YOUR DECK PROJECT

UNLOADING, STORING, AND HANDLING DUXXBK

DuxxBak decking should be stored on a dry, flat surface with supports every 48". Do not stack decking more than four units (bundles) high.

The cutting and drilling of DuxxBak decking does not produce respirable dust. However, it is always good practice to wear a dust mask as well as safety glasses and hearing protection when operating power saws and drills.

INSTALLATION HINTS

It is best to mark, cut, and install deck boards when they are all at roughly the same temperature.

If possible, install your decking during the coolest part of the day. Although the ideal installation temperature is 60 degrees Fahrenheit, this is not always possible. However, there are steps that can be taken to help reduce the effects of expansion and contraction such as storing boards in the shade and making final cuts after boards have cooled.

Lay the boards out prior to installation to determine the most pleasing effect of the deck grain.

Calculate the number of boards that will be required to cover the deck area. **Note that each full width board will cover 5-3/4"**.

Cut boards to length allowing a 1-7/16" overhang. This will allow for the installation of a 7/16" fascia board and a final overhang of 1". If it is your practice to install all of the boards and then make the final cut along a chalk line leave the boards slightly longer.

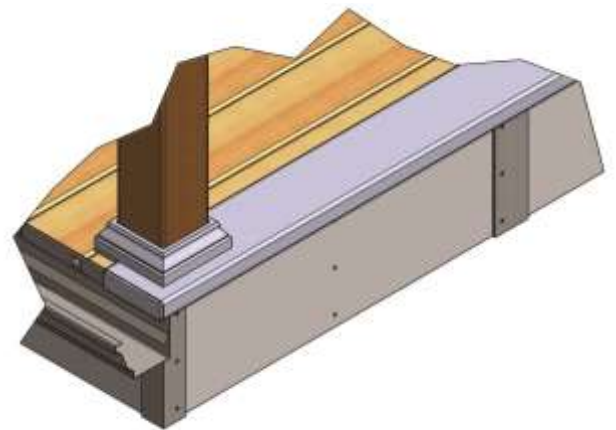
Note: It is possible to conceal the heads of the trim head screws for a more attractive finish. Insert the screws just below the surface of the board. Then, use the rounded end of a ballpeen hammer to fold the material around the point of insertion over to cover the opening left by the screw insertion.

INSTALLATION OF YOUR DECK

Step 1: Install fascia

Install fascia to the outer joists (rim joists and outside joists) of the deck substructure. This will allow for flashings to be installed over the top of the joist and fascia.

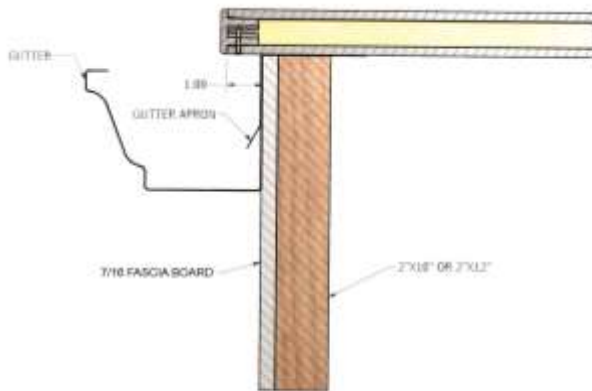
- Use a minimum of three evenly spaced fasteners every 12" or two evenly spaced fasteners every 12" if the fascia has been ripped down to 6" or less in width.
- If two or more pieces of fascia must be butted together, leave a 3/16" gap and cover the gap with a 1" or 2" piece of fascia installed vertically. Assure that the cover fasteners only penetrate one of the fascia boards at the gap in order to allow for expansion and contraction. (Please see illustration)
- The same 3/16" gap should be allowed at corners to allow for expansion and contraction. A corner molding can be fabricated from the walls of a small section of GeoDeck 4"x4" sleeve to cover the point where two pieces of fascia meet at a corner. The cover should only be attached through one wing of the cover to allow for expansion and contraction. (Please see illustration)



INSTALLATION OF YOUR DECK (CONT.)

Step 2: Install gutter apron

Cut and install coated aluminum (or other material) gutter apron to the joist at the end of the deck where the water will shed from the deck. (Please see illustration)



Step 3: Determine Starting Point

Determine which side of the substructure will be the starting point for your deck. For the purpose of these instructions the deck boards will start at that left side and work to the right as viewed from the end of the deck opposite of your home.

Step 4: Assure most desired appearance

Lay the deck boards out to determine how the deck will best show its unique brushed appearance.

Step 5: Make preparations

Make any necessary preparations in the areas where the deck will be attached to the house or other structure. It may be necessary to remove the lower layer of siding to allow for proper flashing.

DuxxBak™ Water Shedding Deck System Installation Methods

(Select Method or Combination of Methods that best fit your needs)

NOTE: Three installation guides are described in the following sections. Please review these and determine if one of these methods or a combination of these methods will serve the requirements of your deck project.

Guide A: Seal and flash deck to house. Seal *“through the deck support posts”* to decking to create a water seal. Also requires a sealant to be applied to the length of the joint of any deck boards that intersect the *“through the deck support posts”*.

Guide B: Seal and flash deck to house. Modify (cut away one cavity) a GeoDeck Commercial board to create a perimeter board that can guide the flow of water from the deck. Requires holes to be cut in the perimeter board at the points where *“through the deck support posts”* will penetrate the deck. Seal *“through the deck support posts”* to perimeter board or deck board as necessary and seal joints of deck boards that will intersect any *“through the deck support posts”*. Also requires a sealant under the wing of the modified perimeter strip wing.

Guide C: Seal and flash deck to house. Cut coated aluminum flashing (length of the deck plus 3/4”) to a 12” width and form one edge of the length up 3/4” and one edge of the length of the flashing down 3/4” to form a 10” wide water diverting pan. Requires holes to be cut in the pan at the points where *“through the deck support posts”* will penetrate the deck. Seal *“through the deck support posts”* to pan and to the decking.

Installation Guide A

Seal and flash deck to house

Seal *“through the deck support posts”* to top surface of the decking

Seal the interlocking tongue and groove of boards that will intersect *“through the deck support posts”*

Step A-1: Install the first deck board

Cut the first board to length allowing a 1” overhang at the outer end of the deck and allowing for the 1/8” gap at the end of the board that intersects the house.

Cut the entire groove wing (1-9/16” cut) away from the first board to leave a smooth outer surface.



Position the first board to the deck with the fastening wing to the right side with the board overhanging the installed fascia board 9/16”.

If the board is being placed against the house a minimum 1/8” gap should be allowed between the length of the board and the wall. A 1/8” gap should also be allowed at the point where the end of the board meets the house.

Notch the board as necessary to allow for *“through the deck support posts”* that may penetrate the deck substructure at the point where the board is being installed. Allow for a clearance of 3/16” on all sides of posts or other structure obstructions when installing the deck board.

- Place a bead of sealant in the interlocking groove if the board seam will intersect a *“through the deck support post”* to assure that water will not find its way through the deck to the surface below.

Place a bead of sealant on the joist where the end of the deck board end will rest at the house side of the deck.



If the length of the board will be placed along a wall of the house also place a bead of sealant on the joist where the board will rest.



Step A-1 Continued

Assure that the deck board is properly positioned.

Secure the deck board to the joists (**a strip of waterproofing butyl tape should be placed on the bottom of the deck board where the fasteners will penetrate through the top of the deck board**) by inserting one trim head screw fastener through the face of the board at each joist with the fastener being placed near a septum of the deck board to take advantage of the points of strength. Assure that the screw heads are seated just below the top surface of the board in order to avoid pullout.

Complete the installation of the first board by inserting a fastener through the fastening wing at each joist assuring that the fasteners are inserted at an approximate 55 degree angle. (Please see illustration)



Step A-2: Install the second and succeeding deck boards.

Cut second and succeeding boards to length allowing a 1" overhang at the outer end of the deck and allowing for the 1/8" gap at the end of the board that intersects the house.

Position the second and succeeding boards by installing the groove of the board being installed over the tongue of the previous board to lock the boards together allowing a minimum 1/8" from the board ends to the wall.

Notch the board as necessary to allow for "through the deck support posts" that may penetrate the deck substructure at the point where the board is being installed. Allow for a clearance of 3/16" on all sides of posts or other structure obstructions when installing the deck board.

- Place a bead of sealant in the interlocking groove if the board seam will intersect "through the deck post" to assure that water will not find its way through the deck to the surface below.

Place a bead of sealant on the joist where the end of the deck board will rest at the house side of the deck.

Insert one fastener through the fastening wing at each joist. Do not fasten through the face of the deck board.

Continue to check for square as the installation moves along.

Step A-3: Install the final deck board.

Cut the final board to length allowing a 1" overhang at the outer end of the deck and allowing for the 1/8" gap at the end of the board that intersects the house.

Cut the final deck board to remove the tongue and fastening wing (1-9/16" cut) away from the final deck board.

- If the deck width did not allow for this final board width, it will be necessary to determine how the final board will be sized and installed.



Step A-3 Continued

Position the final board to the deck with the board overhanging the installed fascia board 9/16".

- If the deck width did not allow for this final board width, it will be necessary to determine how the final board will be sized and installed.

If the board is being placed against the house a minimum 1/8" gap should be allowed between the length of the board and the wall. A 1/8" gap should also be allowed at the point where the end of the board meets the house.

Notch the board as necessary to allow for "through the deck support posts" that may penetrate the deck substructure at the point where the board is being installed. Allow for a clearance of 3/16" on all sides of posts or other structure obstructions when installing the deck board.

Place a bead of sealant in the interlocking groove if the board seam will intersect a "through the deck support post" to assure that water will not find its way through the deck to the surface below.

Place a bead of sealant on the joist where the end of the deck board will rest at the house side of the deck.

If the length of the board will be placed along a wall of the house, also place a bead of sealant on the joist where the board will rest.

Assure that the decking board is properly positioned.

Secure the deck board to the joists (**a strip of waterproofing butyl tape should be placed on the bottom of the deck board where the fasteners will penetrate through the top of the deck board**) by inserting two trim head screws through the face of the board at each joist with the fastener being placed near a septum of the deck board to take advantage of the points of strength. Assure that the screw heads are seated just below the top surface of the board in order to avoid pullout.

Step A-4: Install seal and flash

Place a bead of sealant between the board ends and the wall to retard water.



Cut and position coated aluminum (or other material) flashing with the flashing being install behind the house wrap material and over the decking.

Place a bead of sealant on top of the decking in the area that will be under the flashing before the flashing is put into its final position.



Step A-4 Continued

Move the flashing into position behind the house wrap material and over the decking assuring that the sealant is bonded to the decking and flashing.



Seal the flashing to the wall under the house wrap using a sealing tape to assure that any moisture that penetrates the house wrap will not find its way behind the flashing.

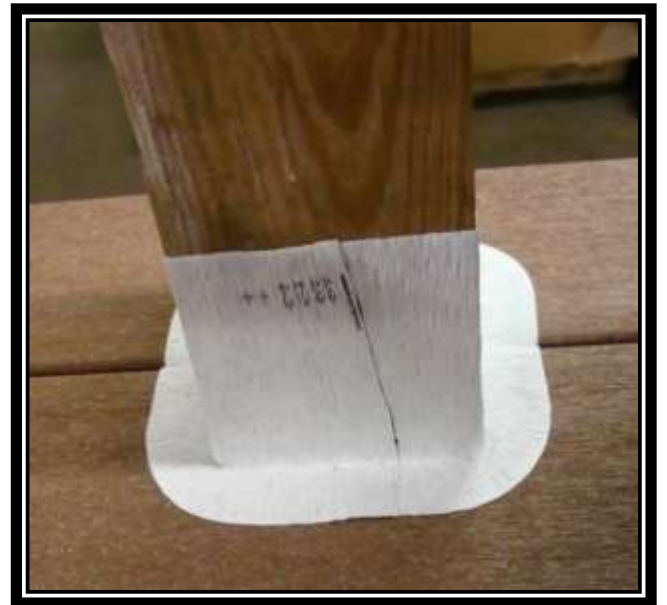


Turn the house wrap material down over the flashing and seal the house wrap material to the flashing with a sealing tape.



Install or reinstall siding if it has been removed for the deck installation.

Install waterproofing butyl tape to the deck board (7/8") and deck post at all locations where a "through the deck support post" penetrates the deck to assure that water does not find its way through the deck to the area below.



The waterproofing butyl tape will be concealed by the post sleeve and base trim when the rail system is installed.



Step A-5: Install end caps to exposed board ends

Install the end caps, selecting right end caps if the board tongue is on the right side as you face the deck at the point where the end caps will be installed. Select left end caps, if the board tongue is on the left as you face the deck at the point where the end caps will be installed.

- Apply a dab of sealant to form a water stop near the end of the deck board fastening wing to prevent any moisture from flowing backwards and then dripping from the edge of the board.
- Apply a generous amount of sealant to the contact points of the end caps before inserting. Avoid placing adhesive at the three drain points at the bottom of the end cap.
- Insert the end cap assuring that the drain slots are down and secure with two stainless steel brad nails or screws.

Step A-6: Install gutters and water diverting system

Install system per your design concept.

Step A-7: Completion

- Install rail system to assure the safety of those who will use your deck.
- Assure a complete and safe installation.
- Clear the deck and surrounding area to assure safety.
- Clean deck as necessary to provide a pleasing surface. Deck will require occasional cleaning to remove dirt and environmental debris.
- Enjoy your new deck.

Installation Guide B

Seal and flash deck to house

Modify GeoDeck Commercial Board to create perimeter board

Seal *“through the deck support posts”* to top surface of perimeter boards and decking

Seal interlocking tongue and groove of boards that will intersect *“through the deck support posts”*

Provide a sealant under the wing of the perimeter board

Step B-1: Install the first deck board

Cut the first board to length allowing a 1” overhang at the outer end of the deck and allowing for the 1/8” gap at the end of the board that intersects the house.

Cut the entire groove wing (1-9/16” cut) away from the first board to leave a smooth outer surface.

Cut a 1/4” wide kerf the entire length of the top surface of the first board and 1/4” from the wall that has just been altered.

Position the first board to the deck with the fastening wing to the right side with the outer edge of the deck board set in 6” from the outer surface of the fascia board.

Place a bead of sealant on the joist where the end of the deck board will rest at the house side of the deck.

Assure that the deck board is properly positioned.

Secure the deck board to the joists (**a strip of waterproofing butyl tape should be placed on the bottom of the deck board where the fasteners will penetrate through the top of the deck board**) by inserting one trim head screw fastener through the face of the board’s left top surface at each joist with the fastener being placed near a septum of the deck board to take advantage of the points of strength. Assure that the screw heads are seated just below the top surface of the board in order to avoid pullout.

Complete the installation of the first board by inserting a fastener through the fastening wing at each joist assuring that the fasteners are inserted at an approximate 55 degree angle. (Please see illustration)



Step B-2: Prepare and Install Left Side Perimeter Board (From GeoDeck Commercial Board)

Cut the GeoDeck commercial board to length allowing for a 1-1/4” overhang at the outer end of the deck and allowing for the 1/8” gap at the end of the board that intersects the house. Note that the perimeter strip is 1/4” longer than the deck boards.

Cut away the side wall of the commercial board that is toward the deck leaving the radius edge at the top in place.

Cut away the bottom wall of the commercial board at a point that is just outside of the first interior septum. This will create a perimeter board with four cavities.



Notch the board as necessary to allow for “*through the deck support posts*” that may penetrate the deck substructure at the point where the board is being installed. Allow for a clearance of 3/16” on all sides of the posts or other structure obstructions when installing the deck board.



Position the prepared perimeter board over the “*through the deck support posts*” and position it to the deck with the perimeter board wing over the installed first board allowing a 3/16” gap between the perimeter board and the deck board.

After determining that the perimeter board will fit properly, lift it and place a bead of sealant where the end of the perimeter board will rest at the house side of the deck.

Also, place a bead of sealant the length of the board on the first deck board in a line that will be under the perimeter board wing when the perimeter board is positioned. The bead of sealant should be placed to intercept water prior to the kerf cut.

Place another bead of sealant on the outer joist where the perimeter board will rest.

Position the perimeter board and assure that it is properly placed.

Secure the perimeter board to the joists (**a strip of waterproofing butyl tape should be placed on the bottom of the deck board where the fasteners will penetrate through the top of the deck board**) by inserting two trim head screw fasteners through the face of the board at each joist with the fasteners being placed near a septum of the perimeter board to take advantage of the points of strength. Assure that the screw heads are seated just below the top surface of the board in order to avoid pullout.

Step B-3: Install the second and seceding deck boards.

Cut second and seceding boards to length allowing a 1” overhang at the outer end of the deck and allowing for the 1/8” gap at the end of the board that intersects the house.

Position the second and seceding boards by installing the groove of the board being installed over the tongue of the previous board to lock the boards together allowing a minimum 1/8” from the board ends to the wall.

Notch the board as necessary to allow for “*through the deck support posts*” that may penetrate the deck substructure at the point where the board is being installed. Allow for a clearance of 3/16” on all sides posts or other structure obstructions when installing the deck board.

Place a bead of sealant in the interlocking groove if the board seam will intersect a “*through the deck post*” post to assure that water will not find its way through the deck to the surface below.

Place a bead of sealant on the joist where the end of deck board will rest at the house side of the deck.

Insert one fastener through the fastening wing at each joist. Do not fasten through the face of the deck board.

Continue to check for square as the installation moves along.

Step B-4: Install the final deck board.

Cut the final board to length allowing a 1" overhang at the outer end of the deck and allowing for the 1/8" gap at the end of the board that intersects the house.

Cut away 1-5/16" of the fastening wing from the final board leaving a 5/16" fastening lip below the board tongue.

Cut the tongue away from the board leaving the new 5/16" lip. (Please see illustration)



Cut a 1/4" wide kerf the entire length of the top surface of the final board and 1/4" from the wall that has just been altered.

Position the final board to the deck with the fastening wing to the right side.

- If the deck width did not allow for this final board width, it will be necessary to determine how the final board will be sized and installed.

If the board is being placed against the house a minimum 1/8" gap should be allowed between the length of the board and the wall. A 1/8" gap should also be allowed at the point where the end of the board meets the house.

Notch the board as necessary to allow for "through the deck support posts" that may penetrate the deck substructure at the point where the board is being installed. Allow for a clearance of 3/16" on all sides of posts or other structure obstructions when installing the deck board.

Place a bead of sealant on the joist where the end of the deck board will rest at the house side of the deck.

If the length of the board will be placed along a wall of the house, also place a bead of sealant on the joist where the board will rest.

Assure that the deck board is properly positioned.

Insert one fastener through the fastening wing at each joist. Do not fasten through the face of the deck board.

Step B-5: Prepare and Install Right Side Perimeter Board (From GeoDeck Commercial Board)

Cut the GeoDeck commercial board to length allowing for a 1-1/4" overhang at the outer end of the deck and allowing for the 1/8" gap at the end of the board that intersects the house. Note that the perimeter strip is 1/4" longer than the deck boards.

Cut away the side wall of the commercial board that is toward the deck leaving the radius edge at the top in place.

Cut away the bottom wall of the commercial board at a point that is just outside of the first interior septum. This will create a perimeter board with four cavities.



Step B-5 Continued

Notch the board as necessary to allow for “through the deck support posts” that may penetrate the deck substructure at the point where the board is being installed. Allow for a clearance of 3/16” on all sides posts or other structure obstructions when installing the deck board.



Position the prepared perimeter board over the “through the deck support posts” and position it to the deck with the perimeter board wing over the installed first board allowing a 3/16” gap between the perimeter board and the deck board.

After determining that the perimeter board will fit properly, lift it and place a bead of sealant where the end of the perimeter board will rest at the house side of the deck.

Also, place a bead of sealant the length of the board on the first deck board in a line that will be under the perimeter board wing when the perimeter board is positioned. The bead of sealant should be placed to intercept water prior to the kerf cut.

Place another bead of sealant on the outer joist where the perimeter board will rest.

Position the perimeter board and assure that it is properly placed.

Secure the perimeter board to the joists (**a strip of waterproofing butyl tape should be placed on the area of the joists where the fasteners will penetrate through the top of the deck board**) by inserting two trim head screw fasteners through the face of the board at each joist with the fasteners being placed near a septum of the perimeter board to take advantage of the points of strength. Assure that the screw heads are seated just below the top surface of the board in order to avoid pullout.

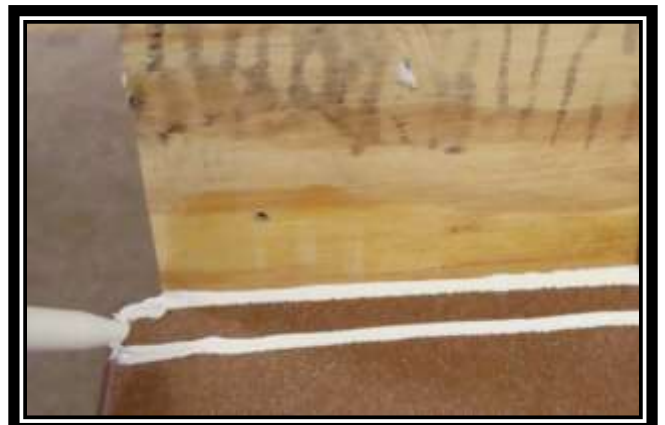
Step B-6: Install seal and flash

Place a bead of sealant between the board ends and the wall to retard water.



Cut and position coated aluminum (or other material) flashing with the flashing being install behind the house wrap material and over the decking.

Place a bead of sealant on top of the decking in the area that will be under the flashing before the flashing is put into its final position.



Step B-6 Continued

Move the flashing into position behind the house wrap material and over the decking assuring that the sealant is bonded to the decking and flashing.



Seal the flashing to the wall under the house wrap using a sealing tape to assure that any moisture that penetrates the house wrap will not find its way behind the flashing.

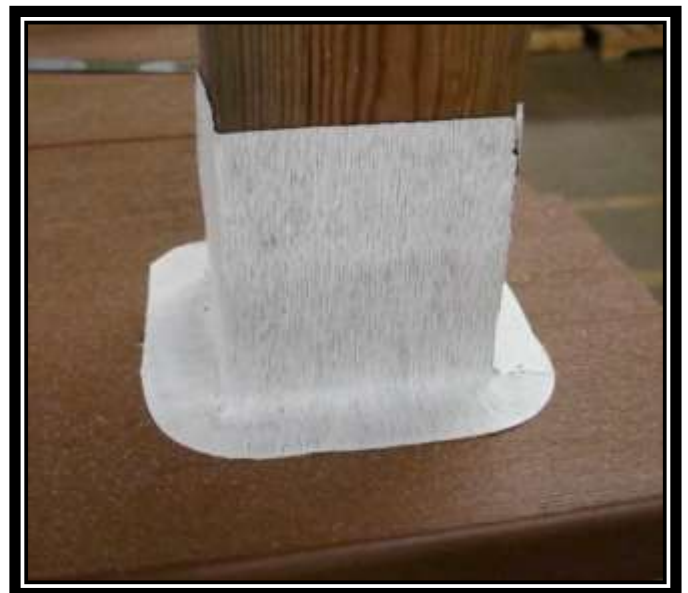


Turn the house wrap material down over the flashing and seal the house wrap material to the flashing with a sealing tape.



Install or reinstall siding if it has been removed for the deck installation.

Install waterproofing butyl tape to the deck board (7/8") and deck post at all locations where a "through the deck support post" penetrates the deck to assure that water does not find its way through the deck to the area below.



The waterproofing butyl tape will be concealed by the post sleeve and base trim when the rail system is installed.



Step B-7: Install end caps to exposed board ends

Install the end caps, selecting right end caps if the board tongue is on the right side as you face the deck at the point where the end caps will be installed. Select left end caps, if the board tongue is on the left as you face the deck at the point where the end caps will be installed.

- Apply a dab of sealant to form a water stop near the end of the deck board fastening wing to prevent any moisture from flowing backwards and then dripping from the edge of the board.
- Apply a generous amount of sealant to the contact points of the end caps before inserting. Avoid placing adhesive at the three drain points at the bottom of the end cap.
- Insert the end cap assuring that the drain slots are down, and secure with two stainless steel brad nails or screws.

Step B-8: Install end caps to exposed perimeter board ends

Position the end caps to the perimeter boards, assuring that the drain slots are pointed downward.

Determine which tabs must be removed from the end caps to avoid interference and cut those tabs away.

Install the end caps to the perimeter boards.

- Apply a dab of sealant caulk to form a water stop near the end of the deck board fastening wing to prevent any moisture from flowing backwards and then dripping from the edge of the board.
- Apply a generous amount of sealant to the contact points of the end caps before inserting. Avoid placing adhesive at the three drain points at the bottom of the end cap.
- Insert the end cap assuring that the drain slots are down, and secure with two stainless steel brad nails or screws.

Step B-9: Install gutters and water diverting system

Install system per your design concept.

Step B-10: Completion

- Install rail system to assure the safety of those who will use your deck.
- Assure a complete and safe installation.
- Clear the deck and surrounding area to assure safety.
- Clean deck as necessary to provide a pleasing surface. Deck will require occasional cleaning to remove dirt and environmental debris.
- Enjoy your new deck.

Installation Guide C

Seal and flash deck to house

Provide a secondary collection pan to collect and divert water that may penetrate at openings

Seal *“through the deck support posts”* to the water diverting pan

Seal *“through the deck support posts”* to the top of the decking

Seal interlocking tongue and groove of boards that will intersect *“through the deck support posts”*

Step C-1: Prepare first water diverting pan

Plan, mark, and cut the first water diverting pan

Cut a 12” wide piece of coated aluminum flashing to the length of the deck substructure plus 3/4” as the first step in providing a water diverting pan. The additional 3/4” will allow water to flow off of the pan and onto the ground or into the gutter system if one is provided.

Bend one edge of the 12” wide flashing **down 3/4”** to form a lip and bend the other edge of the 12” wide flashing **up 3/4”** to form a lip. This will leave a 10-1/2” wide water diverting pan.

Verify that the pan is correctly sized by placing it in position along the left side of the deck with the downward turned lip along the outer edge of the deck substructure and fascia.

Layout the positions of any *“through the deck support posts”* that will penetrate the deck substructure by **marking the corner points of the support posts** on the pan.

Then, layout a square within the points that is set back from the corner points 3/4” on each side at each post location.

Cut the square at each post location and then make a 45 degree cut to the marked corner points at each corner of the cutout.

After each of the corner cuts is complete turn the tabs that are formed up at a 90 degree angle to form pressure tabs on the pan.

The installation of additional wood cross blocking under the water diverting pans will be beneficial.



Step C-2: Install the first water diverting pan

Position the water diverting pan over the support posts and down on to the substructure with the downward pointing tab against the fascia and deck substructure.



Strips of waterproofing butyl tape should be placed on top of the water diverting pan where the fasteners will penetrate through the fastening wing.



Seal the pan to each protruding post with a waterproofing butyl seal tape. Seal carefully to the aluminum pan and up each post on all sides at least 3". Assure that the seal is tightly adhered to all surfaces.



Step C-3: Install the first deck board

Cut the first board to length allowing a 1" overhang at the outer end of the deck and allowing for the 1/8" gap at the end of the board that intersects the house.

Cut the entire groove wing (1-9/16" cut) away from the first board to leave a smooth outer surface.

Position the first board to the deck with the fastening wing to the right side with the board overhanging the installed fascia board 1".



If the board is being placed against the house a minimum 1/8" gap should be allowed between the length of the board and the wall. A 1/8" gap should also be allowed at the point where the end of the board meets the house.

Notch the board as necessary to allow for "through the deck support posts" that may penetrate the deck substructure at the point where the board is being installed. Allow for a clearance of 3/16" to allow for expansion and contraction on all sides of the posts or other structure obstructions when installing the deck board.

Place a bead of sealant in the interlocking groove if the board seam will intersect a "through the deck support post" to assure that water will not find its way through the deck to the surface below.

Place a bead of sealant on the joist where the end of the deck board will rest at the house side of the deck.



Step C-3 Continued

If the length of the board will be placed along a wall of the house, also place a bead of sealant on the joist where the board will rest.



Assure that the deck board is properly positioned and that the second deck board will fit within the pan at the up turned lip when it is installed.

Secure the deck board to the joists (**strips of waterproofing butyl tape should be placed on top of the water diverting pan where the fasteners will penetrate through the top of the deck board**) by inserting one trim head screw fastener through the face of the board at each joist with the fastener being placed near a septum of the deck board to take advantage of the points of strength. Assure that the screw heads are seated just below the top surface of the board in order to avoid pullout. (Please see illustration)

Complete the installation of the first board by inserting a fastener through the fastening wing at each joist assuring that the fasteners are inserted at an approximate 55 degree angle. (Please see illustration)



Step C-4: Install the second and seceding deck boards.

Cut second and seceding boards to length allowing a 1" overhang at the outer end of the deck and allowing for the 1/8" gap at the end of the board that intersects the house.

Position the second and seceding boards by installing the groove of the board being installed over the tongue of the previous board to lock the boards together allowing a minimum 1/8" from the board ends to the wall. The second deck board should fit within the pan and the third deck board should interlock with the second as it slips over the up turned lip of the pan.

Notch the boards as necessary to allow for "*through the deck support posts*" that may penetrate the deck substructure at the point where the board is being installed. Allow for a clearance of 3/16" on all sides of the posts or other structure obstructions when installing the deck board.

Install water diverting pans for outer edge "*through the deck support posts*". **Preparation is described in Step C-5 on the next page.**

Step C-4 Continued

Position the outer edge water diverting pan over the support post and down on to the substructure with the upward pointing tabs being interlocked between the joints of two deck boards on either side of the “through the deck support post”.



Place a bead of sealant along the back edge of the water diverting pan to form a dam that will help assure that water will not flow backward and will not find its way to the area below. Provide blocking under the pan to provide support.



Seal the pan to the protruding post with a waterproofing butyl tape. Seal carefully to the pan and up each post on all sides at least 3”. Assure that the seal is tightly adhered to all surfaces.

Place a bead of sealant in the interlocking groove if the board seam will intersect a structural deck post to assure that water will not find its way through the deck to the surface below.

Place a bead of sealant on the joist where the end of the deck board will rest at the house side of the deck.

Insert one fastener through the fastening wing at each joist (**strips of waterproofing butyl tape should be placed on top of the water diverting pans as these are encountered along the outer edge of the deck**). Do not fasten through the face of the deck board.

Continue to check for square as the installation moves along.

Step C-5: Prepare outer edge of deck single post water diverting pans

A small water diverting pan can be installed at each “through the deck support post” along the outer edge of the deck.

Cut a 12” wide piece of coated aluminum flashing to the length of 13”.

Bend both ends of the 13” wide flashing **up 3/4”** to form a 3/4” lip on both sides. This will leave an 11-1/2” wide water diverting pan.

Layout the positions of the “through the deck support posts” that will penetrate the deck substructure by **marking the corner points of the support posts** on the aluminum pan.

Then, layout a square within the points that is set back from the corner points 3/4” on each side at each post location.

Cut the square at each post location and then make a 45 degree cut to the marked corner points at each corner of the cutout.

Step C-5 Continued

After each of the corner cuts is complete, turn the tabs that are formed up at a 90 degree angle to form a pressure tab on the aluminum pan.



Step C-6: Prepare final water diverting pan

Plan, mark, and cut the first collection pan

Cut a 12" wide piece of coated aluminum flashing to the length of the deck substructure plus 3/4" as the first step in providing a water diverting pan. The additional 3/4" will allow water to flow off of the aluminum pan and onto the ground or into the gutter system if one is provided.

Bend one edge of the 12" wide flashing **up 3/4"** to form a 3/4" lip and bend the other edge of the 12" wide flashing **down 3/4"** to form a lip. This will leave a 10-1/2" wide water diverting pan.

Verify that the pan is correctly sized by placing it in position along the right side of the deck with the downward turned lip along the outer edge of the deck substructure and fascia.

Layout the positions of any "through the deck support posts" that will penetrate the deck substructure by **marking the corner points of the support posts** on the pan.

Then, layout a square within the points that is set back from the corner points 3/4" on each side at each post location.

Cut the square at each post location and then make a 45 degree cut to the marked corner points at each corner of the cutout.

After each of the corner cuts is complete, turn the tabs that are formed up at a 90 degree angle to form pressure tabs on the pan.

Step C-7: Install the second water diverting pan

Position the water diverting pan over the support posts and down on to the substructure with the downward pointing tab against the fascia and deck substructure.

Seal the pan to each protruding post with a waterproofing butyl seal tape. Seal carefully to the aluminum pan and up each post on all sides at least 3". Assure that the seal is tightly adhered to all surfaces.

Step C-8: Install the final two deck boards

Position the second to last board to interlock the preceding board while interlocking the upturned lip of the water diverting pan. Secure this board at each joist.

Cut the final board to length allowing a 1" overhang at the outer end of the deck and allowing for the 1/8" gap at the end of the board that intersects the house.

Cut the final deck board to remove the tongue and fastening wing (1-9/16" cut) leaving a smooth surface.

- If the deck width did not allow for this final board width, it will be necessary to determine how the final board will be sized and installed.



Step C-8 Continued

If the board is being placed against the house, a minimum 1/8" gap should be allowed between the length of the board and the wall. A 1/8" gap should also be allowed at the point where the end of the board meets the house.

Notch the board as necessary to allow for "through the deck support posts" that may penetrate the deck substructure at the point where the board is being installed. Allow for a clearance of 3/16" on all sides of posts or other structure obstructions when installing the deck board.

Seal the pan to the protruding post with a waterproofing butyl tape. Seal carefully to the pan and up each post on all sides at least 3". Assure that the seal is tightly adhered to all surfaces.

Place a bead of sealant in the interlocking groove if the board seam will intersect a "through the deck support post" to assure that water will not find its way through the deck to the surface below.

Place a bead of sealant on the joist where the end of the deck board will rest at the house side of the deck.

If the length of the board will be placed along a wall of the house also place a bead of sealant on the joist where the board will rest.

Assure that the deck board is properly positioned.

Secure the deck board to the joists (**strips of waterproofing butyl tape should be placed on top of the water diverting pan where the fasteners will penetrate through the top of the deck board**) by inserting two trim head screws through the face of the board at each joist with the fasteners being placed near a septum of the deck board to take advantage of the points of strength. Assure that the screw heads are seated just below the top surface of the board in order to avoid pullout.

Step C-9: Install seal and flash

Place a bead of sealant between the board ends and the wall to retard water.



Cut and position coated aluminum (or other material) flashing with the flashing being install behind the house wrap material and over the decking.

Place a bead of sealant on top of the decking in the area that will be under the flashing before the flashing is put into its final position.



Step C-9 Continued

Move the flashing into position behind the house wrap material and over the decking assuring that the sealant is bonded to the decking and flashing.



Seal the flashing to the wall under the house wrap using a sealing tape to assure that any moisture that penetrates the house wrap will not find its way behind the flashing.



Turn the house wrap material down over the flashing and seal the house wrap material to the flashing with a sealing tape.



Install or reinstall siding if it has been removed for the deck installation.

Install waterproofing butyl tape to the deck board (7/8") and deck post at all locations where a "through the deck support post" penetrates the deck to assure that water does not find its way through the deck to the area below.



Step C-9 Continued

The waterproofing butyl tape will be concealed by the post sleeve and base trim when the rail system is installed.



Step C-10: Install end caps to exposed board ends

Install the end caps, selecting right end caps if the board tongue is on the right side as you face the deck at the point where the end caps will be installed. Select left end caps, if the board tongue is on the left as you face the deck at the point where the end caps will be installed.

- Apply a dab of sealant to form a water stop near the end of the deck board fastening wing to prevent any moisture from flowing backwards and then dripping from the edge of the board.
- Apply a generous amount of sealant to the contact points of the end caps before inserting. Avoid placing adhesive at the three drain points at the bottom of the end cap.
- Insert the end cap assuring that the drain slots are down and secure with two stainless steel brad nails or screws.

Step C-11: Install gutters and water diverting system

Install system per your design concept.

Step C-12: Completion

- Install rail system to assure the safety of those who will use your deck.
- Assure a complete and safe installation.
- Clear the deck and surrounding area to assure safety.
- Clean deck as necessary to provide a pleasing surface. Deck will require occasional cleaning to remove dirt and environmental debris.
- Enjoy your new deck.

STAIR INSTALLATION

Use GeoDeck or TerrainDeck traditional S4S deck boards for the construction of stair treads for a safe installation.

Install stairs on stringers that are installed on 12" centers.

Leave a 3/16" gap between the stair tread boards.

Install according to local codes and acceptable construction practices.

CARE AND MAINTENANCE

Occasional cleaning will help to keep your deck looking fresh.

Regular cleaning will help to keep the brushed surface and grooves between the deck boards free of debris. A nylon bristle brush or broom will make the task easier.

A pressure washer with a fan tip may be carefully used to clean your deck if it is guided along in the direction of the grain. Always test a small area to assure that the surface texture is not damaged. Always follow safety precautions.

Although your DuxxBak™ Water Shedding Deck System is durable, care should be taken to avoid scratching. If scratches do appear it may be possible to carefully draw a stainless steel brush across the scratches in the direction of the grain to remove or reduce the scratches. Always test a small area before proceeding.

Many stains can be removed with an all-purpose household cleaner, concentrated dish soap, laundry detergent, degreaser or deck cleaner. Fresh stains are usually more easily removed and a nylon bristle brush will help achieve the best results. Always test a small area before proceeding.

Mold and mildew that may form on the surface of your deck are environmentally generated and will not damage your deck. These can generally be removed with cleaners that are designed to remove mold and mildew along with the use of a pressure washer and nylon bristle brush as described above. Always test a small area before proceeding.

Always make necessary repairs to maintain a safe and enjoyable deck.

Deck surfaces can become hot during periods of hot summer weather. It is recommended that footwear be worn to protect against unexpected hot surfaces.

WARRANTY

Your DuxxBak Water Shedding Deck System comes with a 25-year limited warranty that provides coverage against splintering and splitting, rot and decay, and termite damage.

Your deck will give you many years of enjoyment. However, like all materials, DuxxBak decking will be subject to color change when exposed to the sun's ultraviolet rays.

Your deck is designed to shed water and will generally keep the under deck area dry when properly installed to include proper seals and flashing. Seals will require regular maintenance.

Every material expands and contracts with temperature change, and engineered decking is no exception. Avoid potential problems by allowing time for proper acclimation of your decking to local temperatures prior to installation. Expansion and contraction is not a product defect and is not covered under the DuxxBak™ Water Shedding Deck System warranty.

You will find our complete warranty on the next page.



Congratulations! As a DuxxBak Water Shedding Deck System owner, you have made a wise investment and you are protected by our twenty-five year limited warranty, which provides coverage against:

- ***Splintering and Splitting***
- ***Rot and Decay Damage***
- ***Termite Damage***

25 Year Limited Warranty

Green Bay Decking, LLC (hereinafter “Manufacturer”) warrants that its DuxxBak products are manufactured from recovered cellulose and plastic, and will not split or splinter, suffer structural damage from termites, rot, mildew, fungal decay, or mold for a period of 25 years from the time of shipment to customer when properly installed and maintained. Mildew or mold may form on the surface of your deck as a result of air pollution and environmental debris. Such surface contamination will not harm your deck and can be removed by occasional cleaning with mild household cleaners or commercial deck cleaning products using a nylon brush or a power washer equipped with a fan tipped wand. DuxxBak is designed to resist the effects of exposure to the sun and environmental elements and will provide many years of excellent service. However, like all materials, DuxxBak will be subject to color change when exposed to the sun’s ultraviolet rays.

MANUFACTURER’S LIABILITY UNDER THIS WARRANTY IS LIMITED SOLELY TO REPLACEMENT OF DEFECTIVE DUXXBK PRODUCTS OR REFUND, WITH THE FIRST 10 YEARS NON-PRORATED AND THE FOLLOWING 15 YEARS ON A STRAIGHT-LINE DEPRECIATING BASIS, AT MANUFACTURER’S OPTION. Purchaser’s sole and exclusive remedy for any claim whatsoever, whether in contract, warranty, tort or strict liability, arising out of the use, storage or possession of DuxxBak products, including without limitation any claim that DuxxBak products failed to perform as warranted, shall be replacement with substituted DuxxBak products or completely refunded in the first 10 years, with the following 15 years based on a straight-line depreciating basis, at Manufacturer’s option. To obtain replacement or refund, the original owner must submit its claim together with this warranty certificate, the original purchase invoice indicating the date of purchase, pictures of the defective DuxxBak products, and a detailed written description to Green Bay Decking, LLC. 1518 South Broadway, Green Bay, WI 54304.

THE WARRANTY SHALL NOT APPLY TO DUXXBK PRODUCTS THAT HAVE NOT BEEN INSTALLED IN ACCORDANCE WITH MANUFACTURER’S AND ICC GUIDELINES (ICC PENDING). “Installation Instructions” can be found at www.GreenBayDecking.com. This warranty shall not cover defects due to (i) natural disasters, including fire, smoke, water, earthquake, lightning or static electricity; (ii) causes external to the DuxxBak product such as, but not limited to, weather; (iii) the neglect, abuse, misuse (including faulty installation, repair or maintenance by other than Manufacturer), improper storage of the DuxxBak product or other failure to comply with the instructions set forth in the documentation and/or manual accompanying DuxxBak product; (iv) a modification of the DuxxBak product not provided by the Manufacturer; (v) a malfunction of any product not provided by Manufacturer with which the DuxxBak product is used or combined; (vi) use, modification or other treatment of the DuxxBak product in a manner for which it was not designed or intended; (vii) defects in articles purchased by Manufacturer and resold by it without alteration and effects in materials purchased by Manufacturer which cannot be discovered by warranty factory inspection; (viii) placement under or subjection to abnormal use conditions; (ix) normal wear and tear; or (x) expansion and contraction. This warranty does not cover product defects on installed decks that were apparent at or prior to installation.

MANUFACTURER’S WARRANTY SHALL APPLY ONLY TO DUXXBK PRODUCTS. IN NO EVENT SHALL MANUFACTURER BE LIABLE FOR LABOR OR OTHER EXPENSES INCURRED BY THE PURCHASER, OR SPECIAL, INCIDENTAL, EXEMPLARY OR CONSEQUENTIAL DAMAGES OF ANY KIND WHATSOEVER. MANUFACTURER’S LIABILITY ARISING OUT OF THE MANUFACTURE, SALE OR SUPPLY OF THE DUXXBK PRODUCTS OR THEIR USE, WHETHER BASED UPON WARRANTY, CONTRACT, TORT, OR OTHERWISE, SHALL NOT EXCEED THE ACTUAL PURCHASE PRICE PAID BY THE PURCHASER FOR THE DUXXBK PRODUCTS.

Purchaser acknowledges that the DuxxBak products are not structural lumber and therefore may not be used as such. PURCHASER IS SOLELY RESPONSIBLE FOR DETERMINING THE SUITABILITY FOR USE OR APPLICATION OF ANY DUXXBK PRODUCT, OR WHETHER DUXXBK PRODUCTS MEET REQUIREMENTS OF APPLICABLE BUILDING CODES OR SAFETY CODES FOR SPECIFIC APPLICATIONS.

No person or entity is authorized by Manufacturer to make and Manufacturer shall not be bound by any statement of representation as to the performance of DuxxBak products other than what is contained in this warranty. This warranty shall not be amended or altered except in written instrument signed by Manufacturer and Purchaser.

THE FOREGOING WARRANTY IS EXCLUSIVE AND IN LIEU OF ANY OTHER WARRANTIES WITH RESPECT TO DUXXBK PRODUCTS, EXPRESSED OR IMPLIED, INCLUDING WITHOUT LIMITATION, ANY IMPLIED WARRANTY OR MERCHANTABILITY, FITNESS FOR A PARTICULAR PURCHASE OR NON-INFRINGEMENT. Laws from time to time in force in certain jurisdictions may imply warranties that cannot be excluded or can only be excluded to limited extent. This warranty shall be read and construed subject to any such statutory provisions. This warranty gives you specific legal rights. You may have other rights, which vary from state to state. To activate the warranty, please fill out and send the warranty card within 30 days of purchase.

This warranty certificate was issued on _____.

Effective January 01, 2014

DuxxBak Water Shedding Deck System

Product Features

- Unique water shedding board requires no hidden fastener system
- Outdoor furniture can be safely stored under the deck
- Outdoor activities can continue during periods of rainfall
- Resistance to decay and mold
- Strength and durability
- Less maintenance
- Eco-friendly
- 25-year limited warranty
- Easy to install
- DuxxBak decking can be installed on joists that are spaced at 24"
- GeoDeck and TerrainDeck S4S Stair Treads can be installed on 12" centers

For More Information

- For the most up-to-date installation instructions, please visit www.GreenBayDecking.com.

Thank you for using our DuxxBak Water Shedding Decking System

Green Bay Decking, LLC

1518 South Broadway
Green Bay, WI 54304
(877) 804-0137

