



East Side Lumberyard Supply Co., Inc. - Herrin

www.eastsidelbr.com

Wholesale Only

All Prices Subject To Change Without Notice

COLOR GUARD 2017 II MDA SHOW

Orders placed Jan. 3rd - Feb. 15th

***Purchase \$2000 order & Receive extra 5% discount**

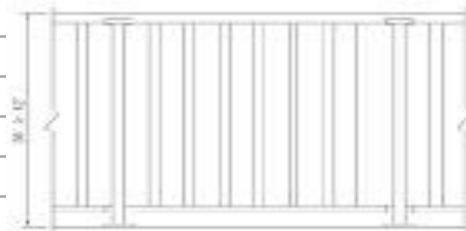
***Purchase \$1200 order & Receive extra 3% discount**

Receive extra 60 Days Dating

***Stocking Dealers receive additional 8% discount on min. \$1200 order**

Item# Description
White Classic Series- includes Mounting Brackets

CGCR34WH	4' Rail Section
CGCR35WH	5' Rail Section
CGCR36WH	6' Rail Section.
CGCR38WH	8' Rail Section
CGCR310WH	10' Rail Section
CGCS34WH	4' Stair Section
CGCS36WH	6' Stair Section
CGCS38WH	8' Stair Section



White Architecural Series w/ Colonial Spindler includes Mounting Brackets

CGAR36WH	6' Rail Section
CGAR38WH	8' Rail Section
CGAS36WH	6' Stair Section
CGAS38WH	8' Stair Section



White Railing Mount Accessories

CG22ABWH	22 Degree Adaptor Block Kit
CG45ABWH	45 Degree Adaptor Block Kit
CGCABWH	Column Adaptor Block for 10" & 12" Column
CGRB4WH	Rail Bracket (Includes 2-Top and 2-Bottom)
CGSBWH	Stair Bracket (Includes 2-Top and 2-Bottom)


White Posts & Mounting Brackets

CG38WH	38"	4 x 4 Blank Post
CG44WH	44"	4 x 4 Blank Post
CG4108WH	108"	4 x 4 Blank Post Sleeve
CGPMB	37"	Blank Post Mounting Bracket w/ Leveling Kit



Blank White Post Caps & Trim



CGFPCWH		4" Flat Cap				
CGNPCWH		4" New England Cap				
CGDPCWH		4" Decorative Post Collar				
		Low Profile 2pc				
COLOR GUARD 2017 ILMDA SHOW						
White Fluted Post Wraps(F-Fluted or S-Smooth)						
CG_PW48WH		4" x 8' 6" White Post Wrap				
CG_PW410WH		4" x 10" White Post Wrap				
CG_PW610WH		6" x 10" White Post Wrap				
CGSPW68WH		6" x 8' 6" Smooth Post Wrap				
CGSCWH		4" - 6" Adjustable Fluted Post Collar (4pc)				
White Colonial Porch Post						
CGCPP5108WH		5" x 108" Colonnade Structural Post				
CGPC5WH		5" Colonnade Post Collar				
Clay Post Wraps (F-Fluted S-Smooth)						
CG_PW410CL		4" x 10' Post Wrap				
CGFPW510CL		6" x 10' Fluted Post Wrap				
CGSCCL		4-6" Post Wrap Collar (4pc)				
Clay Classic Series - Includes Mounting Bracket						
CGCR36CL		6' Rail Section				
CGCR38CL		8' Rail Section				
CGCR310CL		10' Rail Section				
CGCS36CL		6' Stair Section				
Clay Post & Accessories						
CG38CL		38" 4 x 4 Blank Post				
CG44CL		44" 4 x 4 Blank Post				
CG4108CL		4" x 108" Blank Post Sleeve				
CGRB4CL		Rail Bracket (Includes 2-Top & 2-Bottom)				
CGSBCL		Stair Bracket (Includes 2-Top & 2-Bottom)				
CGFPCCL		4" Flat Cap				
CGNPCCL		4" New England Post Cap				
CGDPCCL		Decorative Post Colar - Low profile 2pc				
Lincoln Black Alum Railing						
CGLR36BL	3' x 6' Rail Section					
CGLR38BL	3' x 8' Rail Section					
CGLR310BL	3' x 10' Rail Section					

CGLS36BL	3' x 6' Stair Section				
CG337BL	3" x 37" Post w/ Cap & Collar				
CG343BL	3" x 43" Post w/ Cap & Collar				
	All other Stock Color Guard products included.				
		Call for pricing			

\$1.58		
4.98		
\$3.95		
Page 9		
\$42.53		
\$51.03		
\$63.18		
\$54.68		
\$8.81		
\$101.45		
\$5.82		
\$66.22		
\$80.80		
\$10.32		
\$120.89		
\$154.31		
\$197.03		
\$120.89		
\$15.19		
\$17.62		
\$35.24		
\$21.87		
\$18.83		
\$2.19		
\$5.47		
\$4.86		
\$125.05		
\$162.26		
\$228.75		

\$130.54		
\$67.00		
\$71.98		

Page #6							

White Post Cover - 120" 4 Piece Snap System

FPC410	New	4" Fluted Post Cover (W/2-2 pc Trim Sets)				
FPC610	New	6" Fluted Post Cover (W/2-2pc Trim Sets)				
FPCT4	New	4" 2-pc Fluted Post Cover Trim Set				
FPCT6	New	6" 2-pc Fluted Post Cover Trim Set				
FPC4	New	4" Cap for Fluted Post Cover				

White Colonial Porch Post

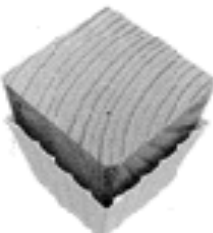
CTP55108	108"	5" x 5" Colonial Post (11,000# Wt Capacity)				
PAPB5	5"	Adjustable Post Base				
CTP44104	104"	4" x 4" Colonial Post (Discontinued)				
CPPB4	4"	Trim Piece for Colonial Porch Post (Discontinued)				

White 4 x 4 Post Sleeve (Slides Over a 4 x 4 Post)

PRP44	4" x 44"	Post W/Cap and Base Included				
PPC4S	4" x 108"	Post W/2 Base Trim Included				



4" x 4"
Post Wrap



6" x 6"
Post Wrap



108" x 5" x 5"
Heavy Duty
Colonial
Porch Post

					Load Bearing:		
					11 000 lbs		

