

# AVOID THE VOID!

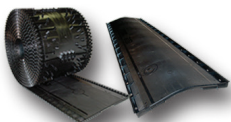


## What you need to know to "AVOID THE VOID" on your new shingle warranty...

- ▶ All major shingle manufacturers void their warranties if their shingles are installed over improperly ventilated attics.
- ▶ Read your new shingle warranty.
- ▶ Properly installed Lomanco® vents will ensure that shingles, paint and other building products will perform to design specifications.
- ▶ Lomanco provides a full line of ventilation solutions that will fulfill your shingle warranty requirements.
- ▶ **IMPORTANT** - Always install your shingles and ventilation according to the manufacturer's installation instructions.
- ▶ Contact us for answers to your ventilation needs.



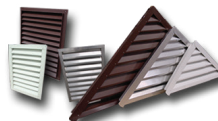
Scan the QR Code for  
**THREE MUST DO STEPS**  
for proper attic ventilation.



**Ridge Vents**



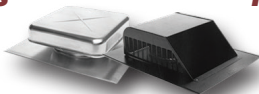
**Turbine Vents**



**Gable Vents**



**Solar Vent**



**Roof Vents**



**Power Vents**



**Intake Vents**